

CHORDIA'S

Gh

GULMOHAR
HEIGHTS

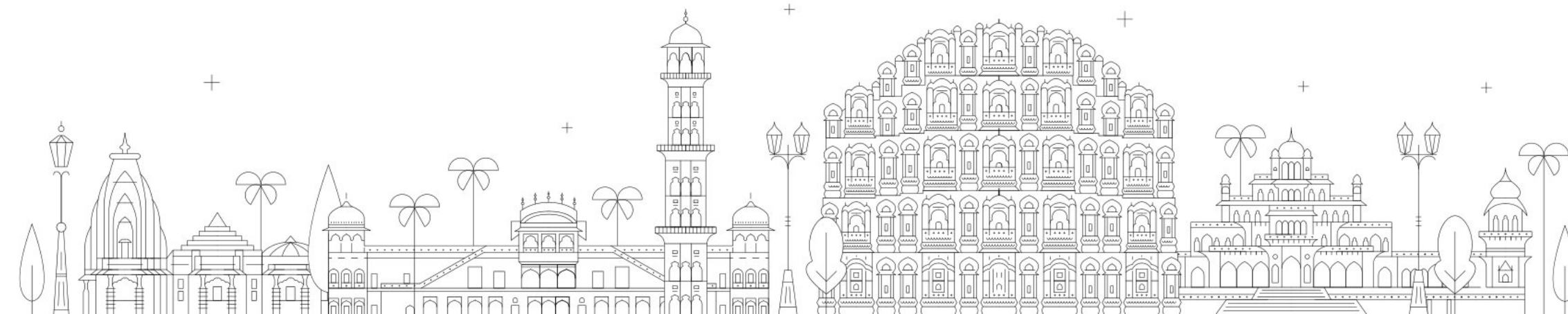




Welcome to Gulmohar Heights

‘खम्मा घणी सा’

Throughout our proud journey of the past 35 years we have witnessed major change in the cityscape. And we feel deeply happy for our dedicated efforts to be a part of this transition by introducing Luxury living within budget. Chordia Builders is committed to craft an affordable living space boasting luxury with a focus on fostering the well-being of communities and people around. Feeling tremendous responsibility towards our residents we feel obliged when they entrust us with the responsibility of building their dream home.





RELIVE

Your Dream...

Introducing Gulmohar Heights, a new dimension in the Chordia Group's portfolio that embodies the concept of 'Dream Living' amidst Jaipur's premier location, just off Jaipur Ajmer Expressway. This luxurious residential haven combines contemporary amenities with exceptional high construction standards, offering an exclusive lifestyle with vibrant surroundings and tranquil, scenic greens.

Each home at Gulmohar Heights boasts a private garden or an expansive terrace, ensuring unobstructed views with wide open spaces. Experience the pinnacle of high-end living in a secluded yet inviting environment designed to be your urban sanctuary. Welcome to Gulmohar Height, where every detail is tailored for a picture-perfect lifestyle!

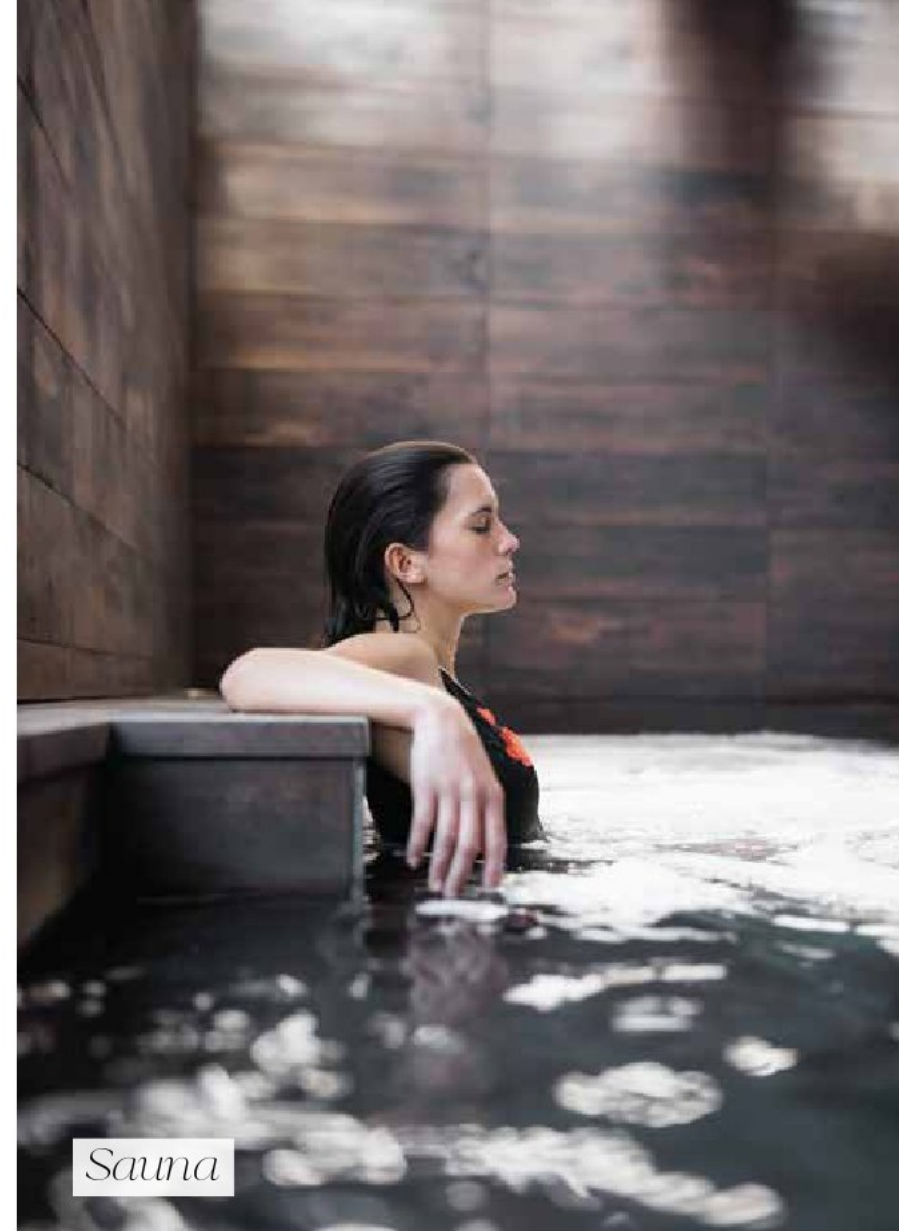


REDISCOVER *Luxury*

Immerse yourself in tranquility at Gulmohar Heights' serene swimming pool, lined by vibrant Gulmohar trees, creating a picturesque backdrop for your rejuvenation.



Swimming Pool



Sauna

Luxurious Spa and sauna facilities, indulge in ultimate relaxation. Feel the pulse of determination in the well-equipped gym as you pave the way for turning your dreams into a tangible reality.

Enhance your overall well-being by utilizing a variety of amenities tailored to improve both your mental and physical health.

- Provision for Yoga
- Indoor GYM
- Yoga
- Outdoor Gym
- Spa
- Steam
- Outdoor GYM
- Space for Aerobics
- Indoor Gym
- Space for Aerobics
- Sauna
- Jacuzzi



Gymnasium



Club House



Theatre



Banquet Hall

It's where elegance meets grandeur, promising an unforgettable experience for your special occasions.

Library

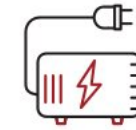
A Library to foster the love for reading and learning in both young minds and adults.



Yoga Deck

Unwind and find inner peace on the serene Yoga Deck, where you can stretch and meditate under the expansive open sky and lush green surroundings.

World-Class Amenities Class-Apart Facilities



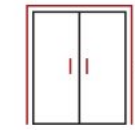
Power Backup
for Common Areas



Pollution Free
Environment



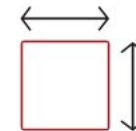
EV Charging Point



High-Speed
Lifts



Parking
Facility



50-60%
Open Area



Rainwater
Harvesting



Fire
Equipment



24x7 3-Tier
Security



CCTV
Surveillance





ReIMAGINE *Life*

Every corner exudes luxury, offering a lifestyle where comfort seamlessly intertwines with elegance.



Master Bedroom

Discover a sanctuary where comfort and elegance blend, offering a tranquil retreat in unparalleled bedrooms.





Bedrooms

A peaceful and inviting space that delights and brings happiness to every member of the family.



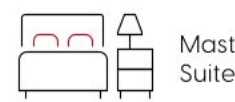
Spacious Interiors



Modular Kitchen



3 Side Ventilation



Master Suites



Vastu Complaint

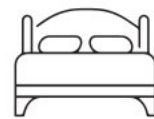


Smart Home Technology



Big Balconies

SPECIFICATION



Drawing Dining & Bedrooms

- Vitrified Tile Flooring
- Flush Door with Stone Door Frame
- Aluminum/UPVC Windows
- Tractor Emulsion Paint
- Modular Electrical Switches
- Copper Piping for AC



Washroom

- Anti-skid Tiles for Flooring
- Flush Door
- C.P. Fittings of Parryware/ Johnson or Equivalent Brand
- Sanitary Ware of Jaquar/Parryware or Equivalent Brand



Kitchen

- Vitrified Tile Flooring
- Granite Counters
- SS Sink
- Modular Electrical Switches
- Aluminum/UPVC Windows
- Semi-Modular



Others

- Power Backup for Common Areas
- Lighting Fixtures in Common Areas
- M.S./S.S. Railing
- Security/CCTV System
- External Paint



Dining Area



REIMAGINE *Family-Time*

Nestled within this haven are expansive green spaces and a meticulously designed play area for kids, providing the perfect setting to enrich your family's experiences and create rememberable moments.

Kids Play Area



Indoor



Our specially curated indoor gaming area is thoughtfully designed to bring families together and create unforgettable memories during family gatherings.



Outdoor



Terrace Garden

Experience the serenity of a peaceful oasis, where vibrant green foliage and sweeping panoramic vistas come together to create a sanctuary of tranquility that offers an escape from the hustle and bustle of city life.



Outdoor Cafe

Enjoy a perfect combination of delicious cuisine and a lavish atmosphere, creating unforgettable dining experiences beneath the twinkling stars.

Night Vistas

Picture yourself surrounded by verdant greenery, with ample space for outdoor recreation and relaxation.





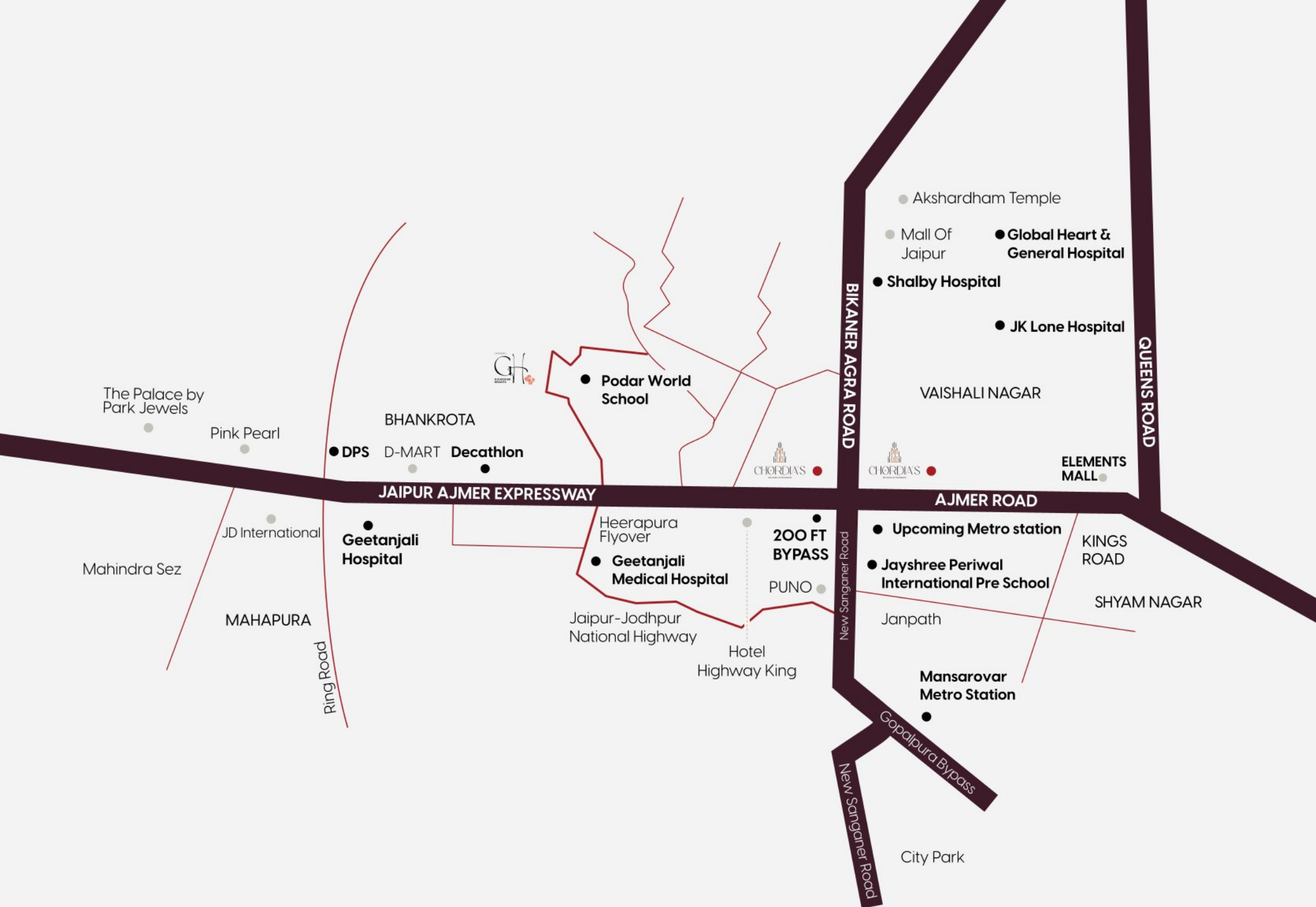
Lush Green Dreams

A retreat for residents to connect with nature and each other, with a dedicated recreation area and amenities designed for all ages.

Gratifying Reality

At Gulmohar Heights, experience the beauty of fostering meaningful connections amidst a serene environment. Watch as the idyllic vision of harmonious living becomes a vibrant reality.





Located Where Dreams Are

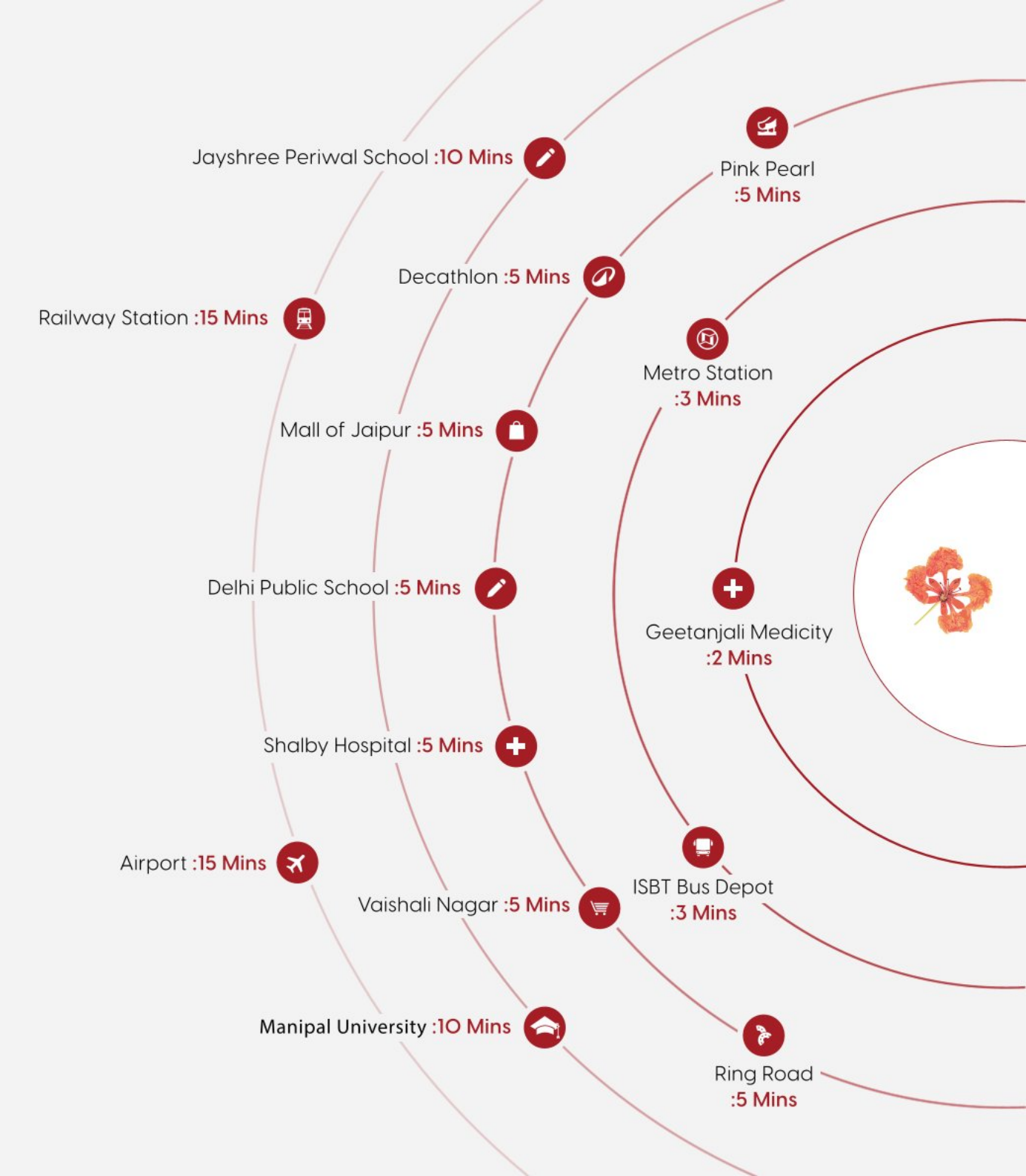
Picture a neighborhood buzzing with vitality, where every corner holds the promise of convenience and growth.

Imagine a landscape dotted with amenities that cater to your every need, from shopping and dining to recreation and relaxation. Now, envision yourself at the heart of it all, surrounded by opportunity and endless possibilities.

At Gulmohar Heights, this vision becomes a reality. Situated in the fastest growing location in Jaipur, our residences offer more than just a home.

With amenities sprouting up all around, now is the perfect time to invest in the future.

Welcome to Gulmohar Heights, where the best of today meets the promise of tomorrow

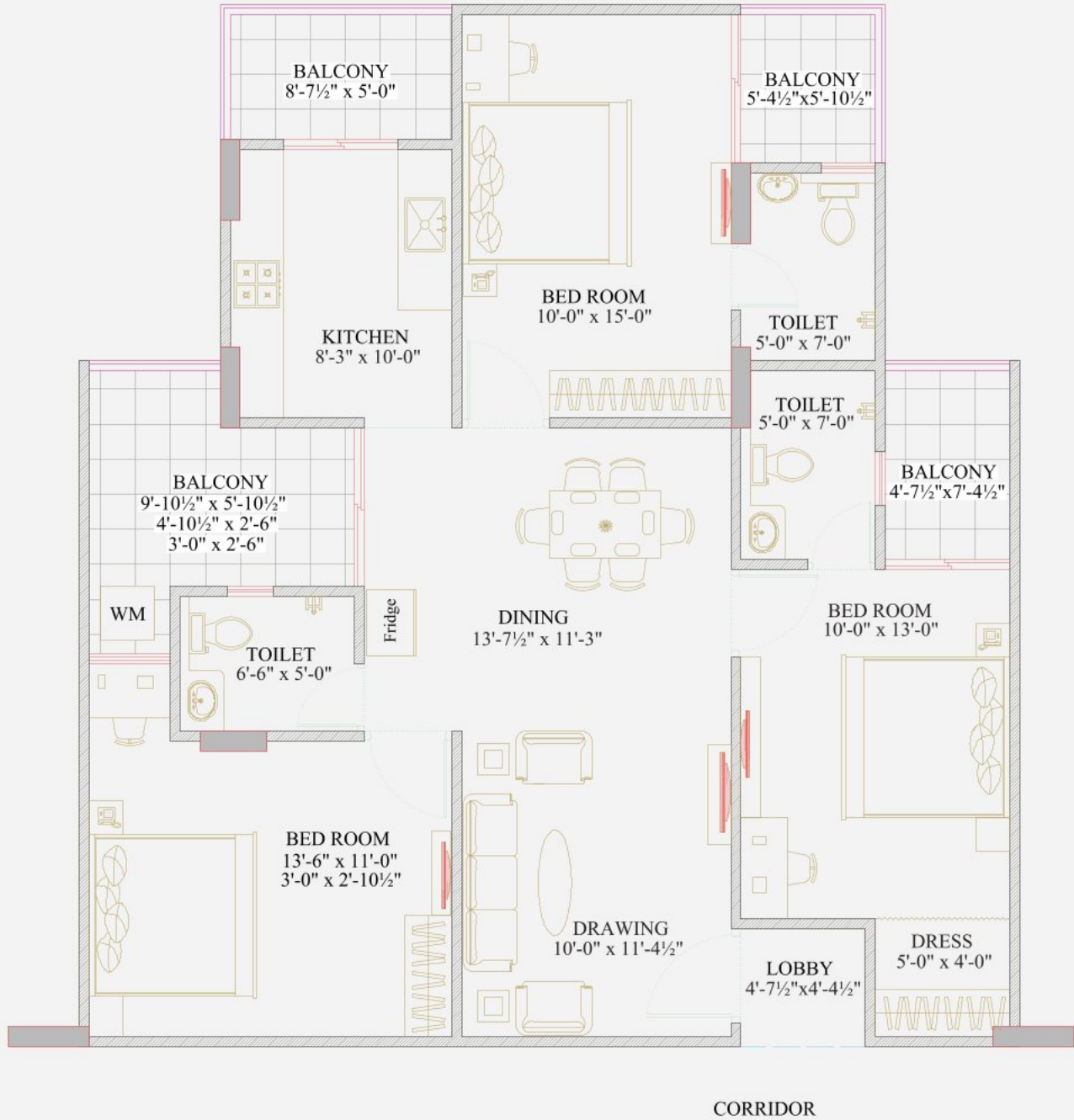


Floor Plan

Typical 3 BHK Unit

Built UP Area (Sq. Ft.)	1211.00
Sale Area	1635.00

GH 4 Unit Plan



Typical 4 BHK Unit

Built UP Area (Sq. Ft.)	1683.85
Sale Area	2273.19

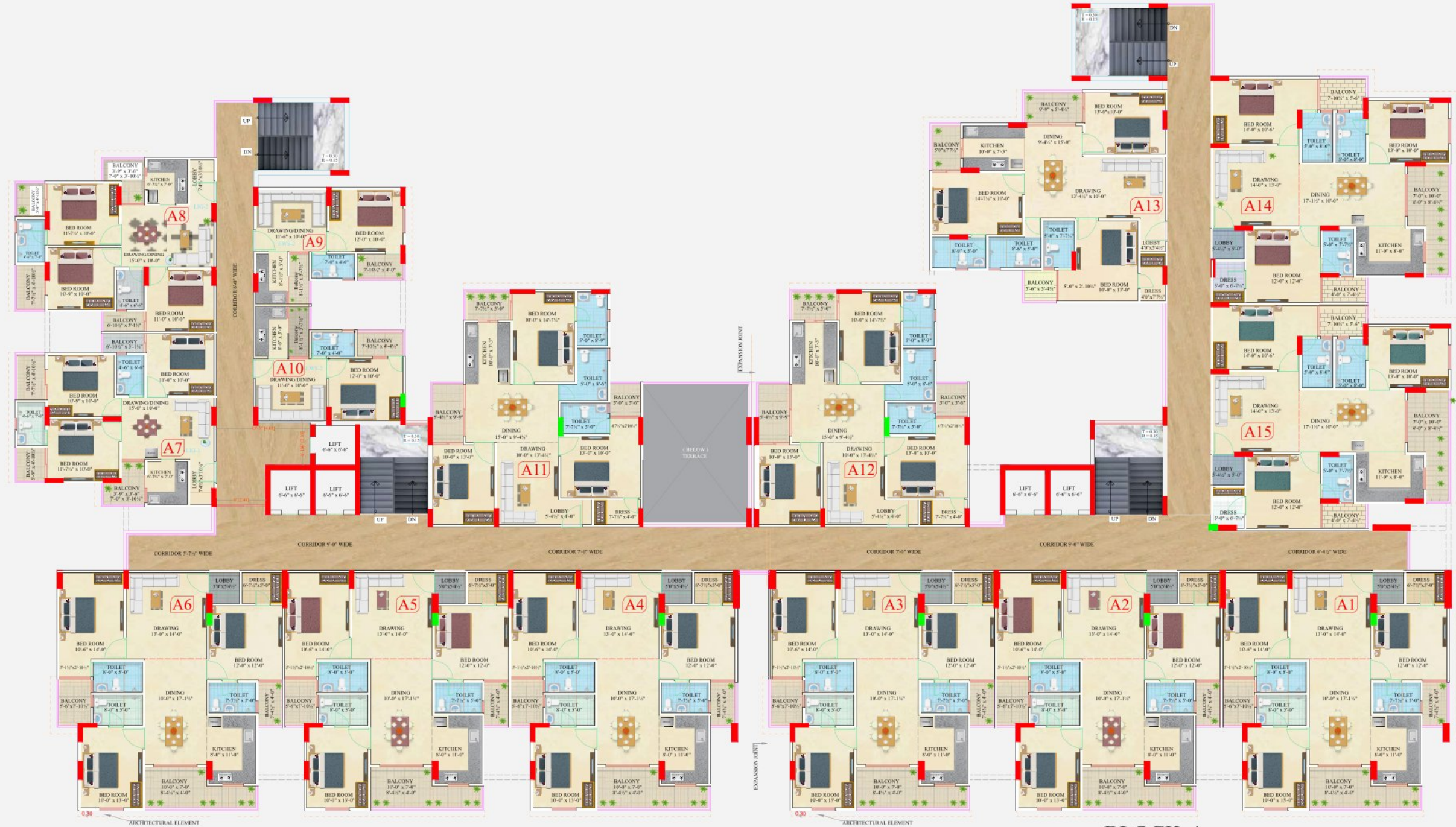
GH 5 Unit Plan





GH 4 Typical Floor Plan

BLOCK-A			
FLAT NO.	FLAT TYPE	BUILT UP AREA	SUPER BUILT UP AREA
A1	3 BHK	1328.26	1793.15
A2	3 BHK	1323.48	1786.69
A3	3 BHK	1328.26	1793.15
A4	3 BHK	1328.26	1793.15
A5	3 BHK	1328.48	1786.69
A6	3 BHK	1328.26	1793.15
A7	3 BHK	663.54	969.90
A8	3 BHK	663.54	969.90



BLOCK-A			
FLAT NO.	FLAT TYPE	BUILT UP AREA	SUPER BUILT UP AREA
A9	1 BHK	346.41	503.68
A10	1 BHK	346.41	503.68
A11	3 BHK	1167.00	1575.45
A12	3 BHK	1167.00	1575.45
A13	3 BHK	1167.00	1575.45
A14	3 BHK	1328.26	1793.15
A15	3 BHK	1328.26	1793.15

GH 5 Typical Floor Plan

BLOCK-A



BLOCK-B

BLOCK-B

FLAT NO.	FLAT TYPE	BUILT UP AREA	SUPER BUILT UP AREA
B1	4 BHK	1683.85	2273.19
B2	4 BHK	1683.85	2273.19
B3	4 BHK	1688.51	2279.48
B4	4 BHK	1688.51	2279.48
B5	4 BHK	1683.85	2273.19
B6	4 BHK	1683.85	2273.19
B7	3 BHK	1328.26	1793.15
B8	3 BHK	1328.26	1793.15
B9	3 BHK	1337.42	1805.51
B10	4 BHK	1687.01	2277.46
B11	4 BHK	1682.42	2271.26
B12	4 BHK	1658.89	2239.50



GH 5 Typical Floor Plan



GH 4 Ground Floor Plan



Seventh Floor Plan



GH 5 Terrace Plan





Established in 1990, each development by the Chordia Group reflects a 34-year legacy of excellence and trust, combined with a commitment to creating enduring developments that cater to the needs of every resident. The wealth of experience and business acumen of Managing Director Mr. Nitin Chordia and Chairman Mr. Vinay Chordia has positioned the group as a leading name in Jaipur's real estate sector.



Mr. Nitin Chordia
Managing Director

Since 1990, our unwavering dedication to enriching the lives of Jaipurites has been the cornerstone of our journey. From our inaugural project, Chordia City, to the soaring heights of Gulmohar Heights, we have fulfilled countless dreams, ushering individuals into realms of possibility.

Guided by the dynamic father-son duo of Chairman Mr. Vinay Chordia and Managing Director Mr. Nitin Chordia, we follow a legacy of hard work, positivity, and prudent thinking. Their combined vision propels us forward, pushing boundaries and redefining standards in the real estate industry.

At our core, we believe that dreams and diligent work shape the world. This belief fuels our commitment to crafting spaces that transcend mere structures, infusing them with a human touch. Whether in residential, commercial, integrated townships, malls, multiplexes, or hospitality sectors, we strive to elevate living experiences.

Our values of commitment, integrity, and passion drive us to surpass expectations, transforming dreams into cherished realities. Chordia City stands as a testament to our vision, embodying our dedication to Jaipur since our inception in 1990.

Vision

To provide cost-effective and innovative architectural and engineering solutions, complemented by superior infrastructure that serves the community and addresses both the fundamental and luxury requirements of our clients. Also, to foster a healthy and supportive work environment for our team, thereby ensuring the integrity and adherence to high standards across all our endeavors.

Mission

Our goal is to establish exemplary standards and uncompromising quality that can serve as an international benchmark. We aspire to chart a course for the future by embracing luxurious and innovative lifestyle trends while making a meaningful contribution to real estate development through the harmonious integration of modern and traditional elements.

Benchmarks with a huge portfolio that comprises of

35 Lacs + Sq. Ft.

Construction and growing

50+ Professional

Sales Team Members

2500+

Happy Customers

500+ Onsite

Manpower Resources

Associations

Embracing the notion that collaboration is the essence of excellence, we are working with the best designers, architects, and contractors to deliver imaginative and sustainable living spaces. Chordia Group is relentlessly working to create structures that will last into the future and foresee the needs of each and every resident.



A-6, Airport Enclave Scheme,
Durgapura, Tonk Road, Jaipur



Business 18, Khasra No. 171/88/1/2
Brijlalpura, Near Copalpur
Bypass. Opposite New Aatish
Market, Jaipur

CHORDIA CITY



Chordia City, Kamla Nehru Nagar,
Behind Heera Pura Power Station,
Ajmer Road, Jaipur

GHAR AANGAN



29, Janpath, Shyam Nagar, Shyam
Nagar, Jaipur, Rajasthan



Chordia City, Near Kamla Nehru
Nagar, Ajmer Road, Jaipur

UPCOMING PROJECTS

COMMERCIAL PROJECT

**TONK ROAD
VAISHALI NAGAR
AIRPORT**

HIGH RISE RESIDENTIAL

AJMER ROAD

Since 1990, we've transformed Jaipur with projects like Chordia City, reaching areas like Tilak Nagar and Bapu Nagar, redefining real estate standards.

CHORDIA'S

GH

GULMOHAR
HEIGHTS



+91 9024 200 400

sales@chordiagroup.com

www.chordiagroup.com

Site Office: Plot No. GH-4, Indraprastha, Chordia City, Ajmer Road, Jaipur

Corporate Office: 29 Janpath, Shyam Nagar, Jaipur, Rajasthan (India)

Disclaimer: Information, images and visuals, drawings, plans or sketches shown in this brochure are only an architect's impression and are only indicative of the envisaged developments and do not constitute an offer, an invitation to offer and/or commitment of any nature between us and recipients. as displayed in the pictures. All intending purchasers are bound to inspect all plans and approvals and visit project site and apprise themselves of all plans and approvals and other relevant information and nothing in this brochure is intended to substitute to the intending purchaser the actual plans/layout and approvals obtained from time to time. The relationship between the Developer and the actual customers will be governed strictly by the agreements to be executed as per RERA Rajasthan and not on the terms of this brochure.

RERA No. RAJ/P/2024/3068 | www.rera.rajasthan.gov.in